



Image 1. Before construction. Intertidal shoreline fronting Rodgers Creek with no defined channel to provide lower tide access for salmon to the creek.



Image 2. Temporary redirection of creek flow and initial channel excavation.



Image 3. Placement of clay/till sealing layer and 15cm minus filter rock.



Image 4. Placement of stream armour rock to help prevent channel erosion by creek flow and waves.



Image 5. Completed base of channel ready for creek complexing.

LEGEND

- Existing Structures
- Elevations in Metres Chart Datum)
- Highwater Line (5.0 m CD)
- Armoured Slope Protection
- Sand / Pebble / Cobble
- Large Woody Debris
- Specially Placed Boulder (>1m)

DRAWING NOTES

- Soundings collected by TopCon Total Station and calibrated to local tide chart (Point Atkinson Tides and Currents Nobeltec).
- All elevations are in metres chart datum (CD) referred to local low water. Negative numbers indicate elevations below local low water.
- Location of structures, natural features and the low water elevation approximated from aerial photographs.
- The information, including bathymetric and survey data, presented on the drawings may vary from current conditions due to the passage of time or seasonal changes in substrate.
- Surveying conducted on September 25, 2015.

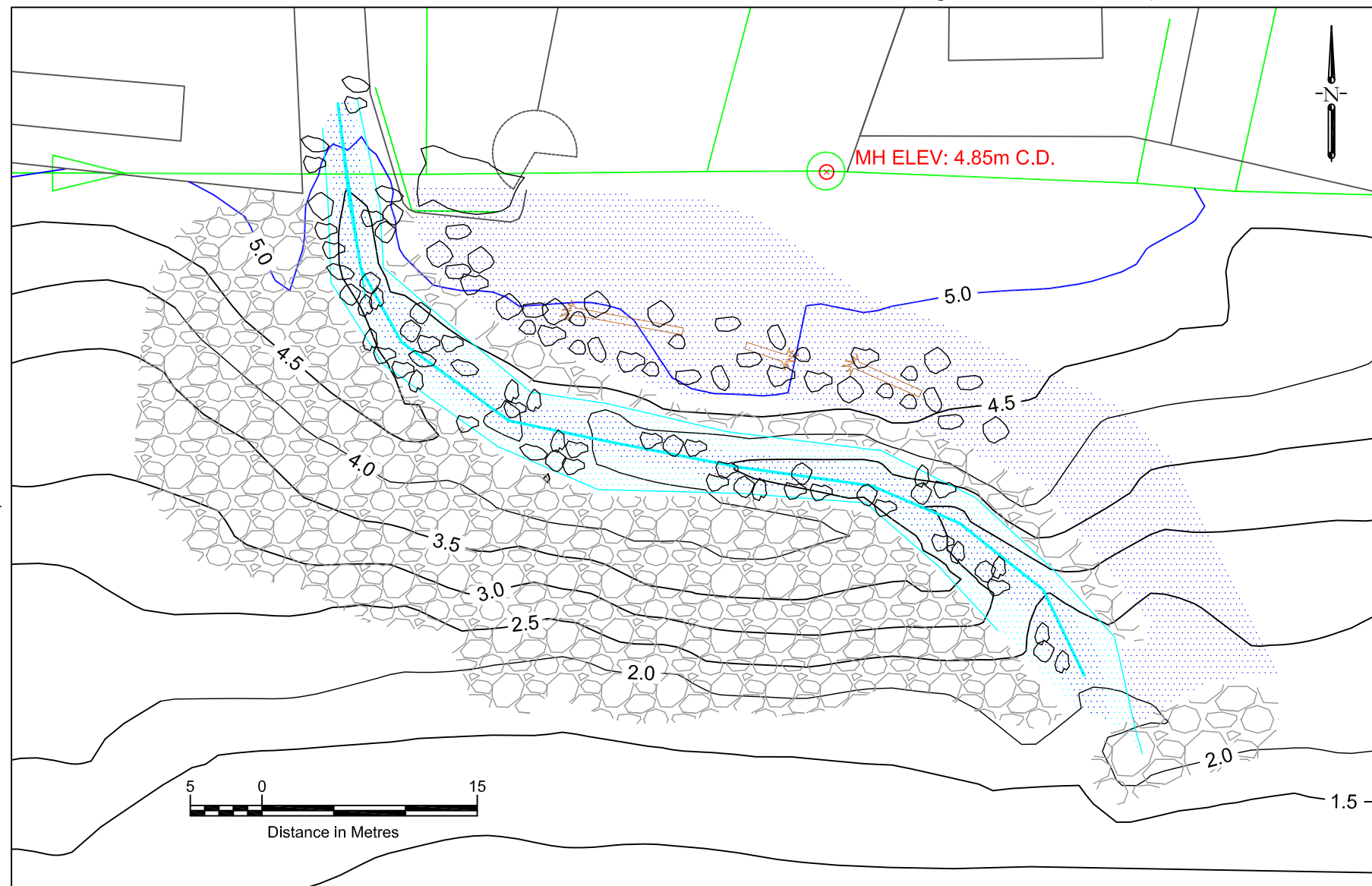


Image 6. Before Rodgers Creek estuary enhancement.



Image 7. After Rodgers Creek estuary enhancement. Note addition of large boulders and stream complexing when compared to Image 5 above.

Ref. No.	REFERENCE
----------	-----------

Client

Author

118 Garden Avenue, North Vancouver, B.C V7P 3H2

Checked by	XIE
Drawn by	DB
Date	Oct. 15, 2015
Scale	1:400
Inspectors	DB DV
Paper	11 x 17

PROJECT	Rodgers Creek Estuary Enhancement Project, West Vancouver, B.C.
DWG. No.	5595-D-15.1